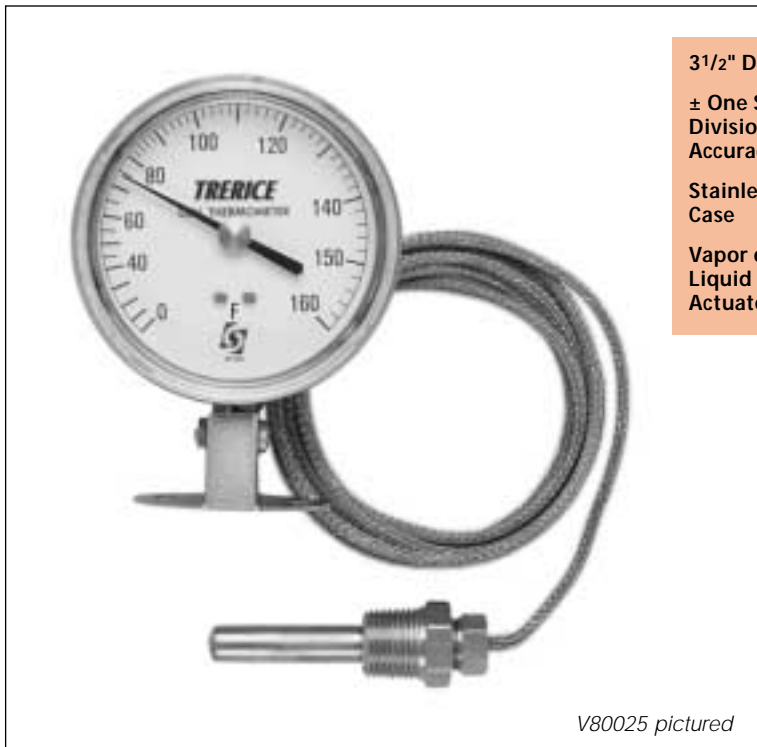


Remote Reading Dial Thermometers

3 1/2" / Stainless Steel Case / Vapor or Liquid Actuation



V80025 pictured

3 1/2" Dial Size
± One Scale Division Accuracy
Stainless Steel Case
Vapor or Liquid Actuated

This Trerice Remote Reading Dial Thermometer is used extensively in the building and construction industry and is the preferred temperature instrument for OEMs worldwide. The stainless steel case is available in many styles for panel and surface mounting. This instrument has a 3 1/2" dial size and is available with either vapor or liquid actuation.

Optional features are also available. Please consult the Options Section for details.

For applications where the process media may be corrosive or contained under pressure, the use of a thermowell is required to prevent damage to the thermometer and facilitate its removal from the process.

Dial Thermometers

Specifications

Model	Size	Case Style	Case Material	Dialface
80025	3 1/2"	Adjustable angle with mounting bracket	Stainless steel	Aluminum, white background with black graduations and markings
80035	3 1/2"	Surface mounted, back flanged, bottom outlet	Window Acrylic, snap-in with nitrile o-ring seal Pointer Adjustable, black finished	Accuracy ±One scale division Approximate Shipping Weight 1.3 lbs [0.59 kg]
80036	3 1/2"	Surface mounted, back flanged, back outlet		
80040	3 1/2"	Flush mounted, front flanged, back outlet		
80041	3 1/2"	Flush mounted, u-clamp, back outlet		

How to Order

Sample Order Number: V80035110B0105

Actuation	Model	Range Code	Thermal System	Capillary Length
V Vapor	80025	See Standard	See Thermal	05 5 Feet
L Liquid	80035	Available Ranges (over)	System Selection (page 28)	10 10 Feet
	80036			15 15 Feet
	80040			20 20 Feet
	80041			

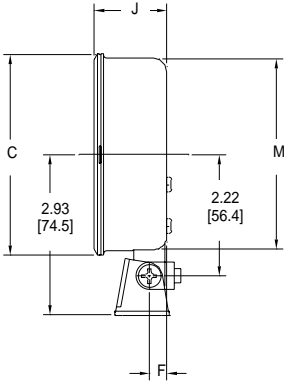
Other: Specify Length in Feet
Vapor: 100 Feet Maximum
Liquid: 20 Feet Maximum

Remote Reading Dial Thermometers

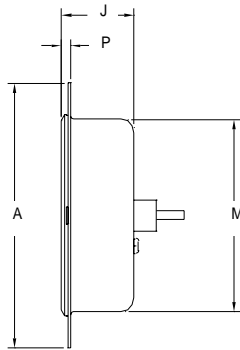
3 1/2" / Stainless Steel Case / Vapor or Liquid Actuation

All dimensions are nominal.
Dimensions in [] are in millimeters.

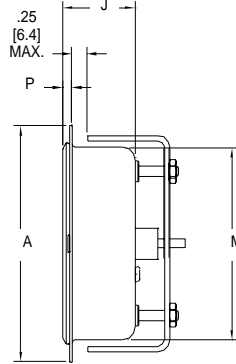
80025 Bracket Mounted



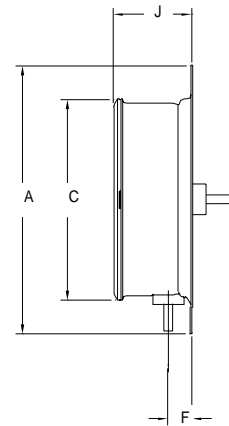
80040 Flush Mount Front Flange



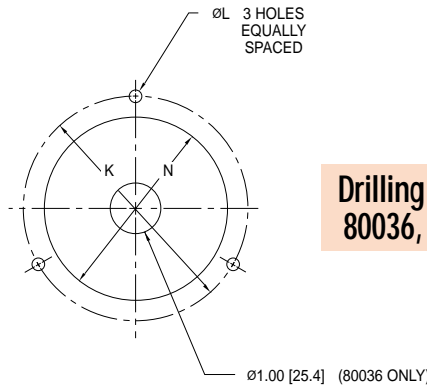
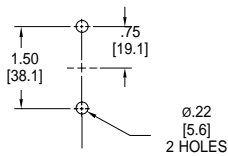
80041 Flush Mount U-Clamp



80035 & 80036 Surface Mount, Back Flange



Mounting Dimensions for 80025 only



Drilling Dimensions for 80036, 80040 & 80041

Model	A	C	F	J	K	L	M	N	P
80025	N/A	3.67 [93.2]	0.32 [8.2]	1.33 [33.9]	N/A	N/A	3.51 [89.2]	N/A	N/A
80035	4.91 [124.7]	3.67 [93.2]	0.43 [11.0]	1.44 [36.6]	4.50 [114.3]	0.25 [6.4]	N/A	N/A	N/A
80040	4.84 [122.9]	N/A	N/A	1.33 [33.6]	4.44 [112.8]	0.25 [6.4]	3.51 [89.2]	3.62 [92.0]	0.17 [4.3]
80041	4.31 [109.5]	N/A	N/A	1.33 [33.8]	N/A	N/A	3.51 [89.2]	3.62 [92.0]	0.17 [4.3]
80036	4.91 [124.7]	3.67 [93.2]	N/A	1.44 [36.6]	4.50 [114.3]	0.25 [6.4]	N/A	N/A	N/A

Standard Available Ranges

Vapor Actuated				Liquid Actuated					
Fahrenheit Code	Range	Celsius Code	Range	Dual Scale Code	Fahrenheit Code	Range	Celsius Code	Range	Dual Scale Code
030	-40° to 150°F	430	-40° to 65°C	230	020	-40° to 120°F	420	-40° to 50°C	220
040	-20° to 100°F	440	-30° to 40°C	240	050	0° to 100°F	450	-20° to 40°C	250
050	0° to 100°F	450	-20° to 40°C	250	060	0° to 160°F	460	-20° to 70°C	260
065	0° to 160°F	465	-20° to 70°C	265	100	30° to 180°F	495	0° to 80°C	300
100	30° to 180°F	500	0° to 85°C	300	110	30° to 240°F	510	0° to 115°C	310
110	30° to 240°F	510	0° to 115°C	310	130	50° to 300°F	530	10° to 150°C	330
120	30° to 300°F	520	0° to 150°C	320					
145	100° to 350°F	545	40° to 180°C	345					
160	200° to 450°F	560	90° to 230°C	360					